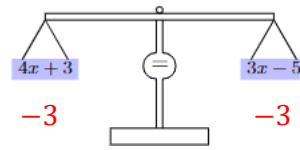


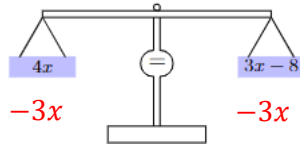
## Solving linear equation

Equation is same as a scale. The "=" sign is in the middle.

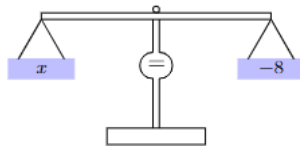
### Example 1)



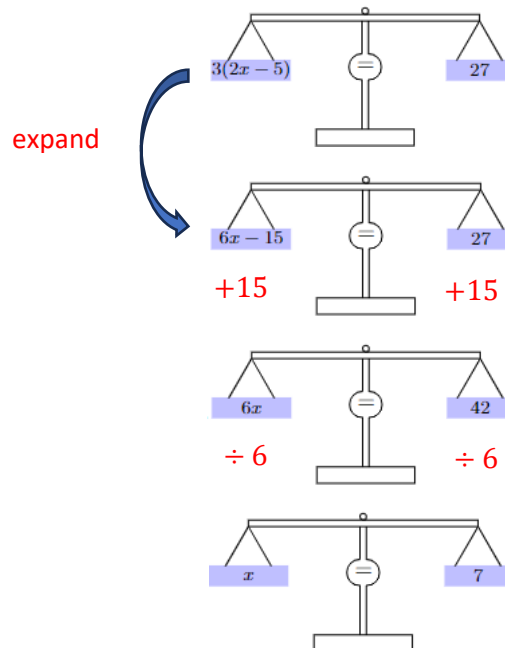
Subtract 3 from both left and right sides at the same time to keep the scale balanced.



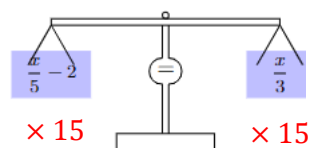
Subtract 3 from both left and right sides at the same time to keep the scale balanced.



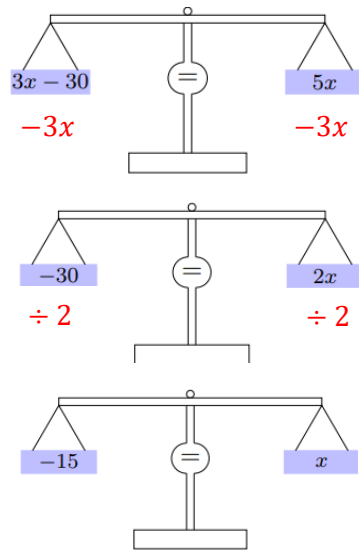
### Example 2)



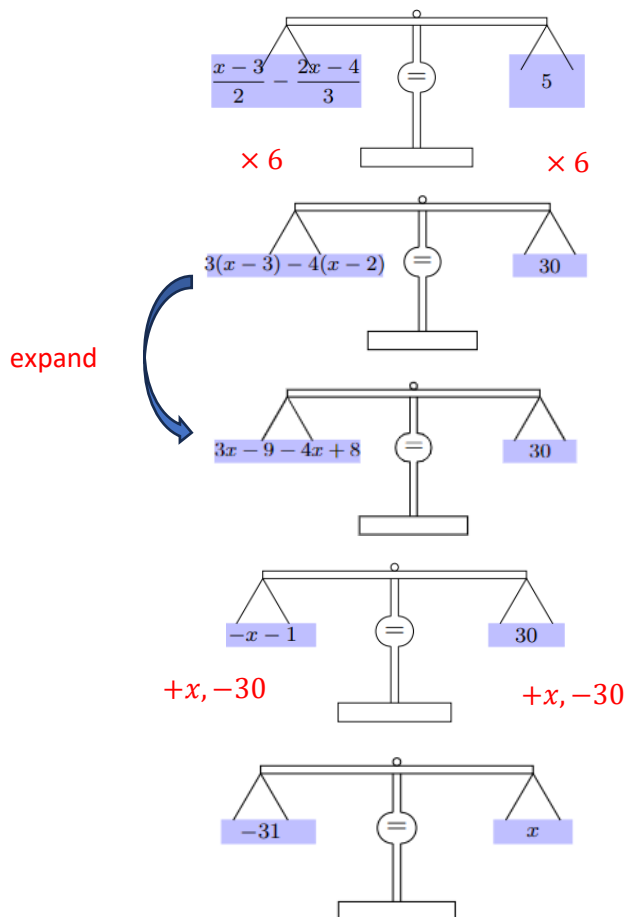
### Example 3)



## Solving linear equation



### Example 4)



### Exercise 1) Solve the following linear equation.

a.  $x - 2 = 3x + 10$

c.  $\frac{x-2}{2} = \frac{3x+10}{4}$

b.  $2(x - 2) = 3x + 10$

d.  $\frac{x-2}{2} - \frac{3x-12}{4} = x$