

## **Summary & Terms**

Chapter 4.2 focuses on composing love themes, looking specifically at melodic form, pitch content, harmonic content, and the relationship between melody and harmony.

## Common Features of Love Themes

1. Slow tempo (quarter note = approx. 35-76 bpm)
2. Simple or Compound Meters, but no irregular or mixed meters
3. Use either major or minor keys (with a clear tonal center). Love themes in major keys feature extended tertian chords and/or suspended harmonies. Love themes in minor keys tend to feature diatonic harmonies.
4. Pickup notes before the first melodic downbeat.
5. Begin theme with a striking / important interval (4<sup>th</sup> or larger)
6. Begin with a presentation phrase
7. Conclude with a continuation phrase that features fragmentation and an increase in tension
8. Harmonic and Melodic **tension and resolution** (see tension and stability chords on page 2)
9. Chromaticism in both melody and harmony
10. Ornamental melodic writing, wide dynamics, idiomatic instrumental writing

## Harmony

Major / Minor Keys are common

Duality (Stability vs. Tension)

Functional Chromaticism

Extended Tertian Harmony

## Melody

Pickup Notes & Large Interval Leap

Simple Rhythms with Ornamentation

Balance (Ascending vs. Descending Motion)

Mostly Stepwise Motion

## Phrase Structure

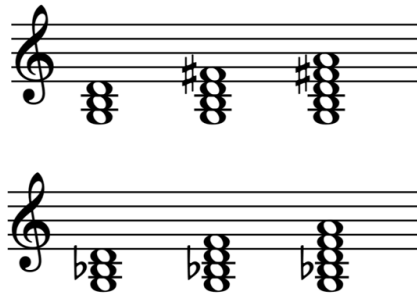
Sentence Structure / Compound Periods are common

Introduction is common

Binary / Ternary is common (short B Theme)

## Stable Chord

major / minor tonic triads and extended chords



## Tension Chord

iv, ii<sup>ø7</sup>, aug. chords, chromatic chords



One of the most prominent features of the common Love Theme is the alternation of stability and tension, often in the form of a stable chord and a tension chord. In this example (top of page 3) from the film "[Love Actually](#)" (Craig Armstrong), the presentation phrase alternates stable chord (tonic) and tension chord (minor iv) with a major IV chord (passing chord) in between. The presentation phrase is harmonically static, as it stays close to the tonic, while the continuation phrase is full of more harmonic motion.

In the following example (from "[The Shape of Water](#)"), Alexandre Desplat similarly alternates stable (CM<sup>7</sup>) and tension (D half dim<sup>7</sup>) chords, throughout the entirety of the A theme. The shorter B theme moves away from the tonic (to the subdominant), but also alternates between two chords (FM and Am).

Introduction

Poco Rubato ♩ = c. 66

Musical score for the Introduction of "Glasgow Love Theme". The score is in 4/4 time and features a piano accompaniment. The melody is in the right hand, and the bass line is in the left hand. The introduction consists of 8 measures. The first four measures are highlighted in orange, and the last four measures are highlighted in green. The chord progression is: A: I iv<sup>4</sup> I iv<sup>4</sup> I IV<sup>4</sup> iv<sup>4</sup> I IV<sup>4</sup> iv<sup>4</sup> I.

Presentation

Continuation

Musical score for the Continuation of "Glasgow Love Theme". The score is in 4/4 time and features a piano accompaniment. The melody is in the right hand, and the bass line is in the left hand. The continuation consists of 8 measures. The first four measures are highlighted in blue, and the last four measures are highlighted in green. The chord progression is: vi I<sup>4</sup> IV V<sup>6</sup>/V ii<sup>ø</sup><sub>3</sub> iv<sup>7</sup> I<sup>9</sup>—8.

A

Introduction

CM<sup>7</sup> D<sup>ø</sup>7 repeats until B

♩ = 50

Musical score for the Introduction of "Overflow of Love". The score is in 4/4 time and features a piano accompaniment. The melody is in the right hand, and the bass line is in the left hand. The introduction consists of 10 measures. The first 8 measures are highlighted in orange, and the last 2 measures are highlighted in blue. The chord progression is: CM<sup>7</sup> D<sup>ø</sup>7 repeats until B.

Antecedent

c.i.

Musical score for the Antecedent and Consequent of "Overflow of Love". The score is in 4/4 time and features a piano accompaniment. The melody is in the right hand, and the bass line is in the left hand. The antecedent consists of 4 measures, and the consequent consists of 4 measures. The antecedent is highlighted in green, and the consequent is highlighted in blue. The chord progression is: b.i. c.i.

Consequent

B

FM<sup>7</sup> Am FM<sup>7</sup> Am FM<sup>7</sup> Am A<sup>b</sup>M<sup>7</sup> B<sup>b7</sup>(<sup>#</sup>)/A<sup>b</sup>

Musical score for the Consequent of "Overflow of Love". The score is in 4/4 time and features a piano accompaniment. The melody is in the right hand, and the bass line is in the left hand. The consequent consists of 8 measures. The first 4 measures are highlighted in green, and the last 4 measures are highlighted in blue. The chord progression is: FM<sup>7</sup> Am FM<sup>7</sup> Am FM<sup>7</sup> Am A<sup>b</sup>M<sup>7</sup> B<sup>b7</sup>(<sup>#</sup>)/A<sup>b</sup>.

(returns to A material)