

Double Coated Breeds

Presented by Allison Alexander

Leading Edge Dog Show Academy

Chris Christensen Systems



May 29, 2026 | West Coast Groom Fest



In this seminar, I will share with you how to use the techniques used in breed standard trims for the show ring and apply them in the salon.

We will discuss how double coated grooming is MUCH more than a bath, how to prep, finish, and choose the right products.

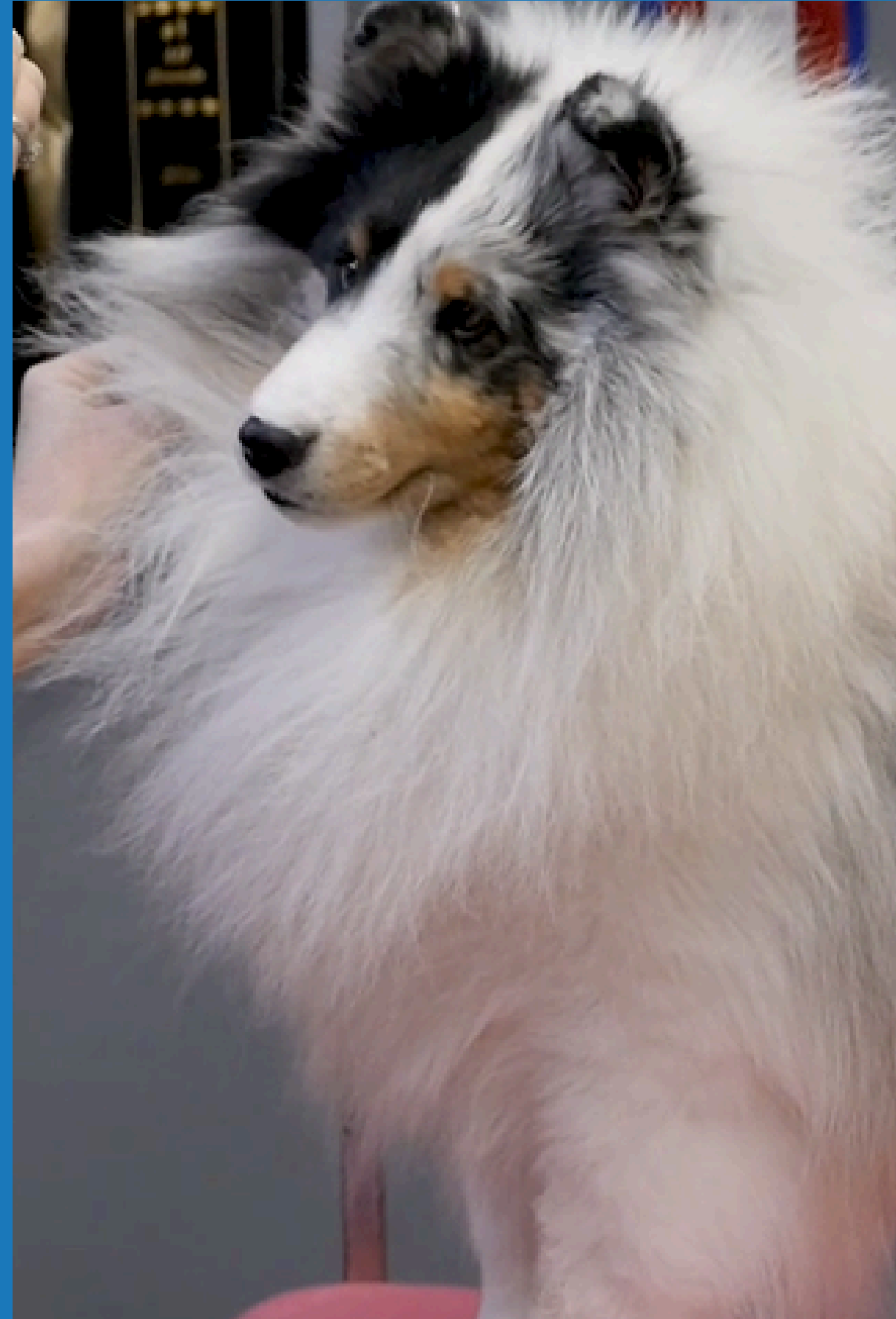
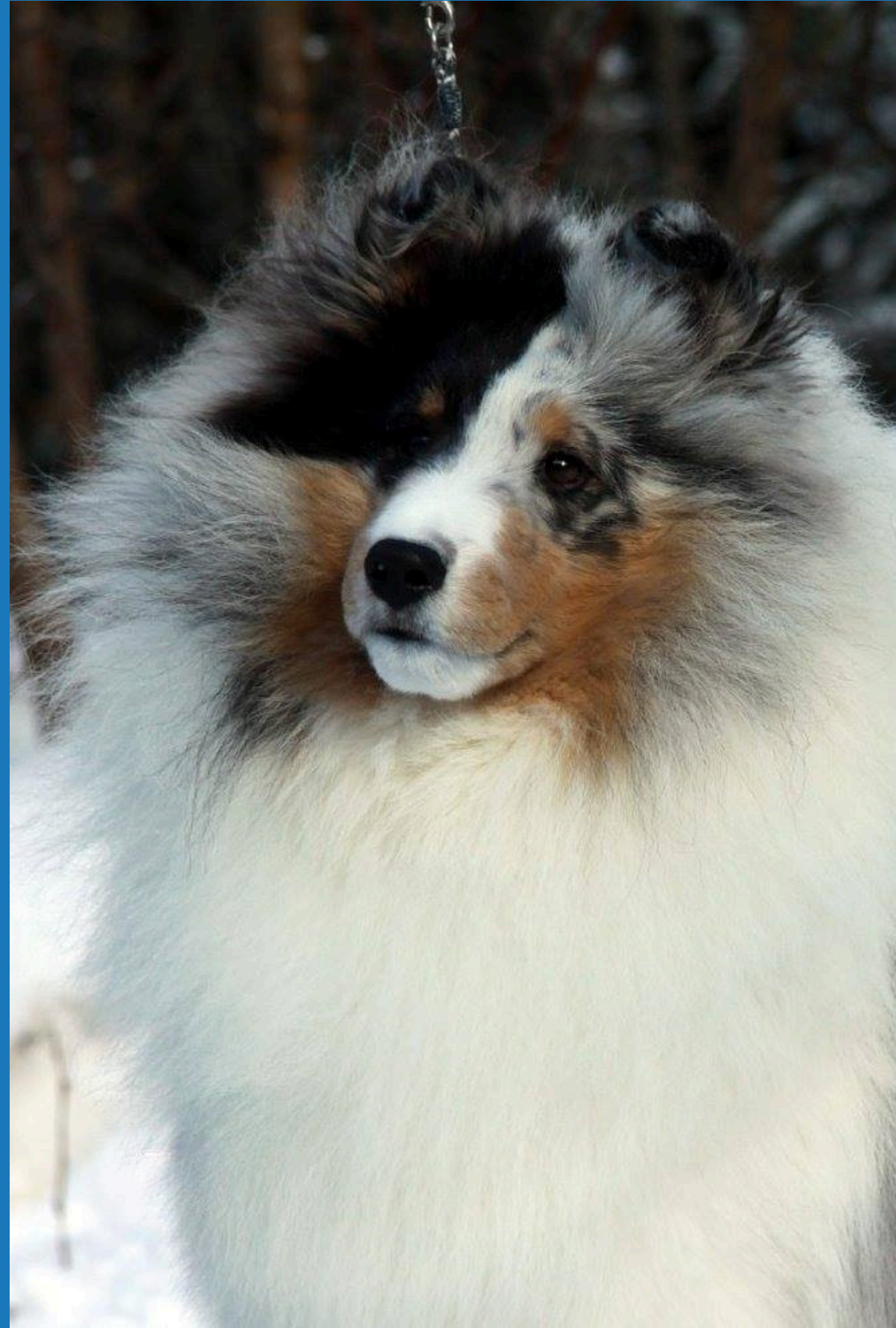
A copy of these slides will be available to you to view online and download. A QR code at the end of the presentation will take you there.

CREATING YOUR BRAND



IN THE SHOW RING WE OFTEN TALK ABOUT CREATING YOUR BRAND,
BUT THIS IS VERY IMPORTANT FOR THE SALON GROOMER FOR
REPEAT CLIENTELE AND ATTRACTING NEW CUSTOMERS





DRYING MUSTS

Drying with Style & Consistency

- The first part of drying **is the last part of bathing**, on the final rinse really push the water out of the coat, then really squeeze the water out of the coat all the way down to the toes.
 - We are always working from front to back and top to bottom
- **Never put a dripping wet dog on the table**, once the water has been squeezed out by hand now repeat with the towel. I always like to dry their face, wipe eyes and ears
- **Let the dog shake**, usually in a large crate or another clean, dry area. A good shake is not only scientifically-proven to remove excess water, but is a good stress reliever for the dog and the groomer
- I like to have **2 clean dry towels on the table**, never start drying a dog on a table with nothing to absorb the water!
 - If the water is being forced out of the dog onto the table it will simply bounce back up onto the dog increasing the drying time, possibly increasing the drying time of other pets, and generally getting everything wet

THE IMPORTANCE OF THE BATH AND STYLIZED DRY

- For many breeds, I will dry them to about 75% dry with the forced air dryer. Others 90-95%.
- For the first 50% of the force dry, don't worry about style. For the last 50%, start thinking about style and how you want to finished product to look.
- Styling and coat correction really happens with the HOT DRYER, and where you can really make a difference



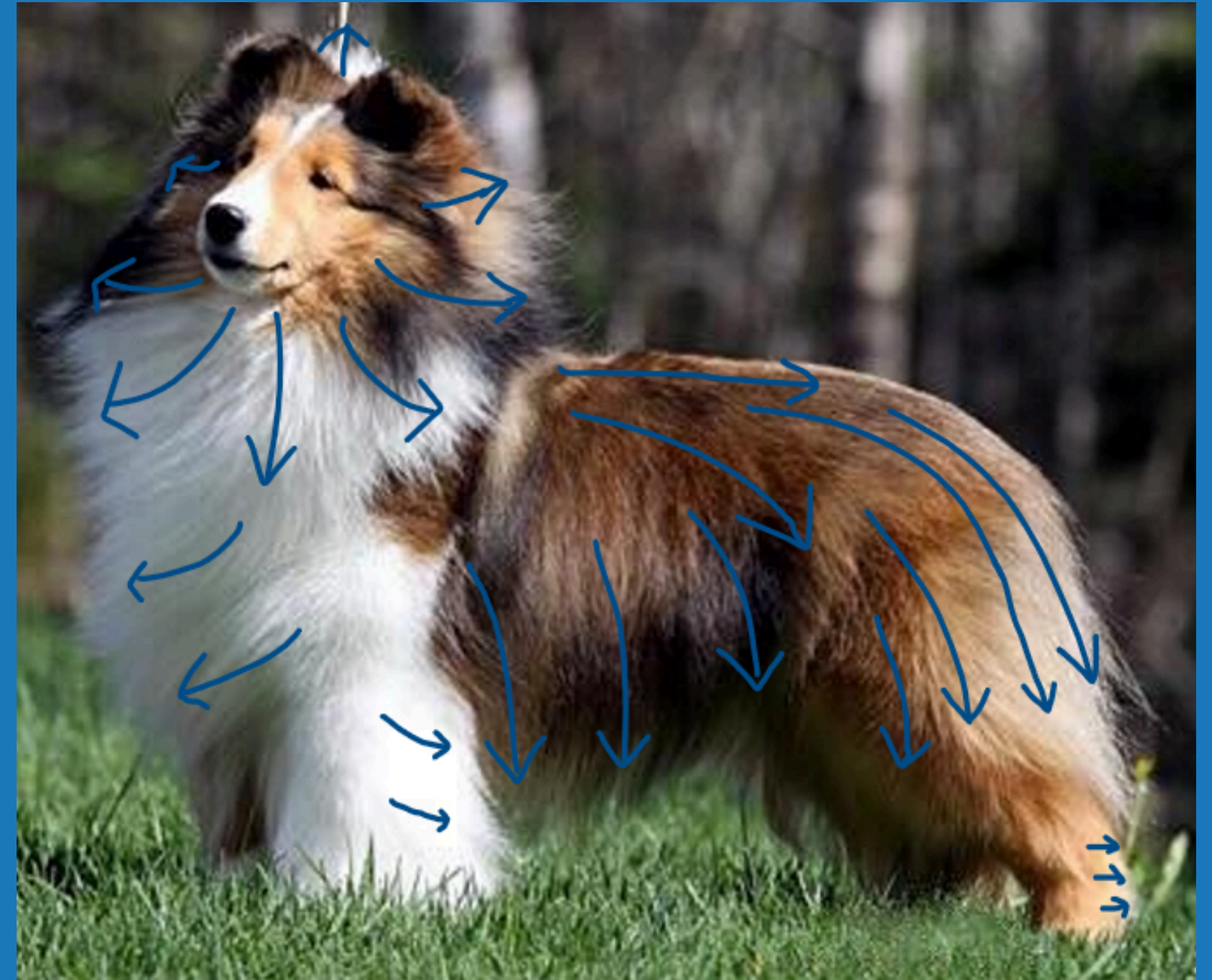
THE BATH AND TIDY

- The Bath and Tidy can never be underestimated as a revenue maker.
- **Some salons can garner more than half of their revenue from this alone**
- When doing the Bath and Tidy on the scissored coat type it is important to use time saving techniques especially as many dogs of this coat type can be heavily coated
- While it is true that Bath and Tidy should only get minimal trimming you still want you brand represented as the dog walks out the door

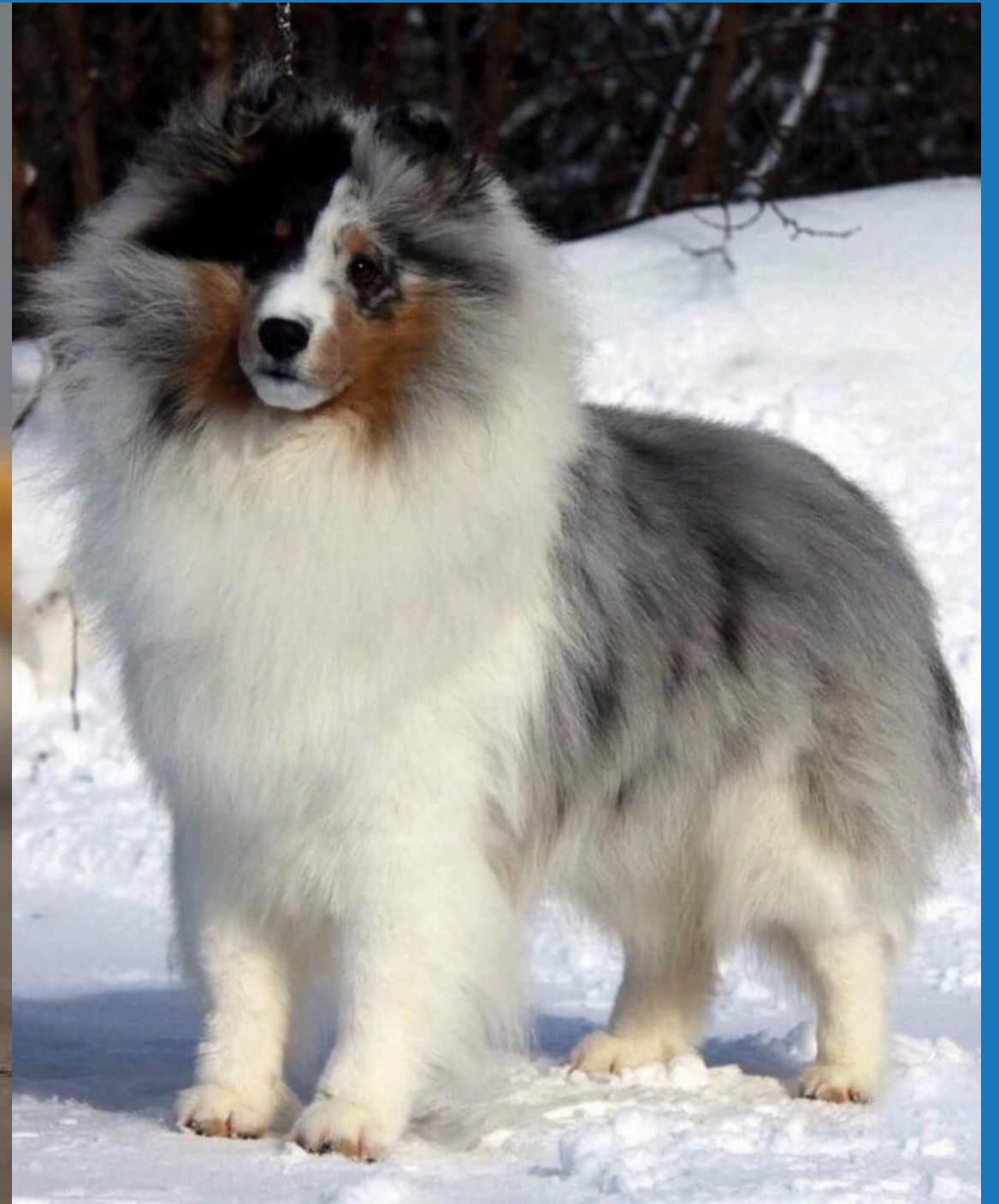


PRO TIP
*I keep 2 Miracle Misters;
1 with a dematting solution
1 with a volumizer to aid in styling*

THE IMPORTANCE OF THE BATH AND STYLIZED DRY



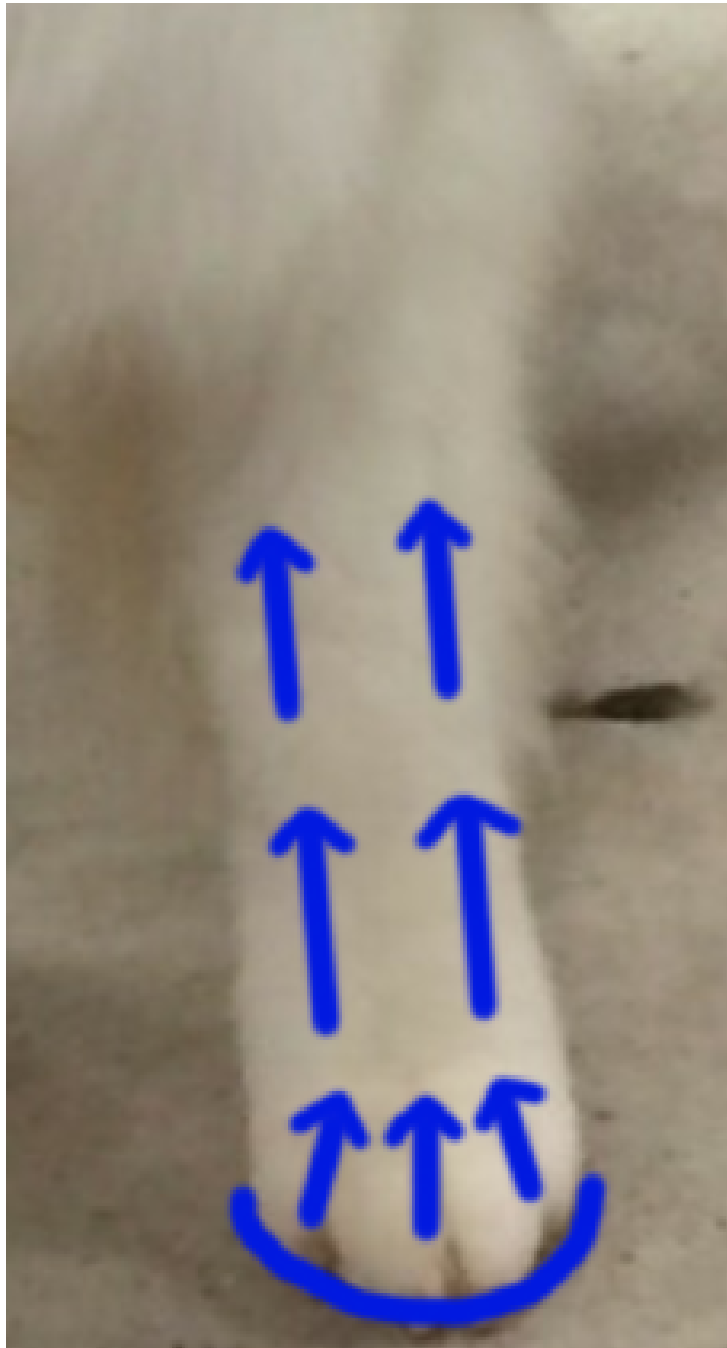
OUTLINE EXAMPLES



DOUBLE COATS - ACHIEVING THE LEADING EDGE

- Rake the undercoat before the bath and after a styled blow dry
- Straight shears on feet only
- Thinners and blenders for outline
- Force dry 80% then hot dry
- Bottoms up, Thick N Thicker aerosol, Colesteral, chalk
- Outline is longer than tall (10/9)
- Do not let pants be too 'busy'
- Curvy underline and topline
- From the withers back, the hair is styled towards the tail. From the withers forward the coat can be dried towards the head







To begin trimming the feet, cut the hair on the bottom of the feet even with the pads. Use short, straight shears.



Next, use your straight shears to trim around the outside of the feet, trimming the hair even with the edges of the pads. For the two front toes, use your thumb to push the pads back and expose the coat on the edge of the toes; trim it even.



With the coat brushed up, move on to trimming the top of the foot with thinning shears. Do not trim from the front, towards the foot - rather, stand behind your dog and trim towards the toes, going with the grain. This will help you avoid scissors marks and a flat foot.



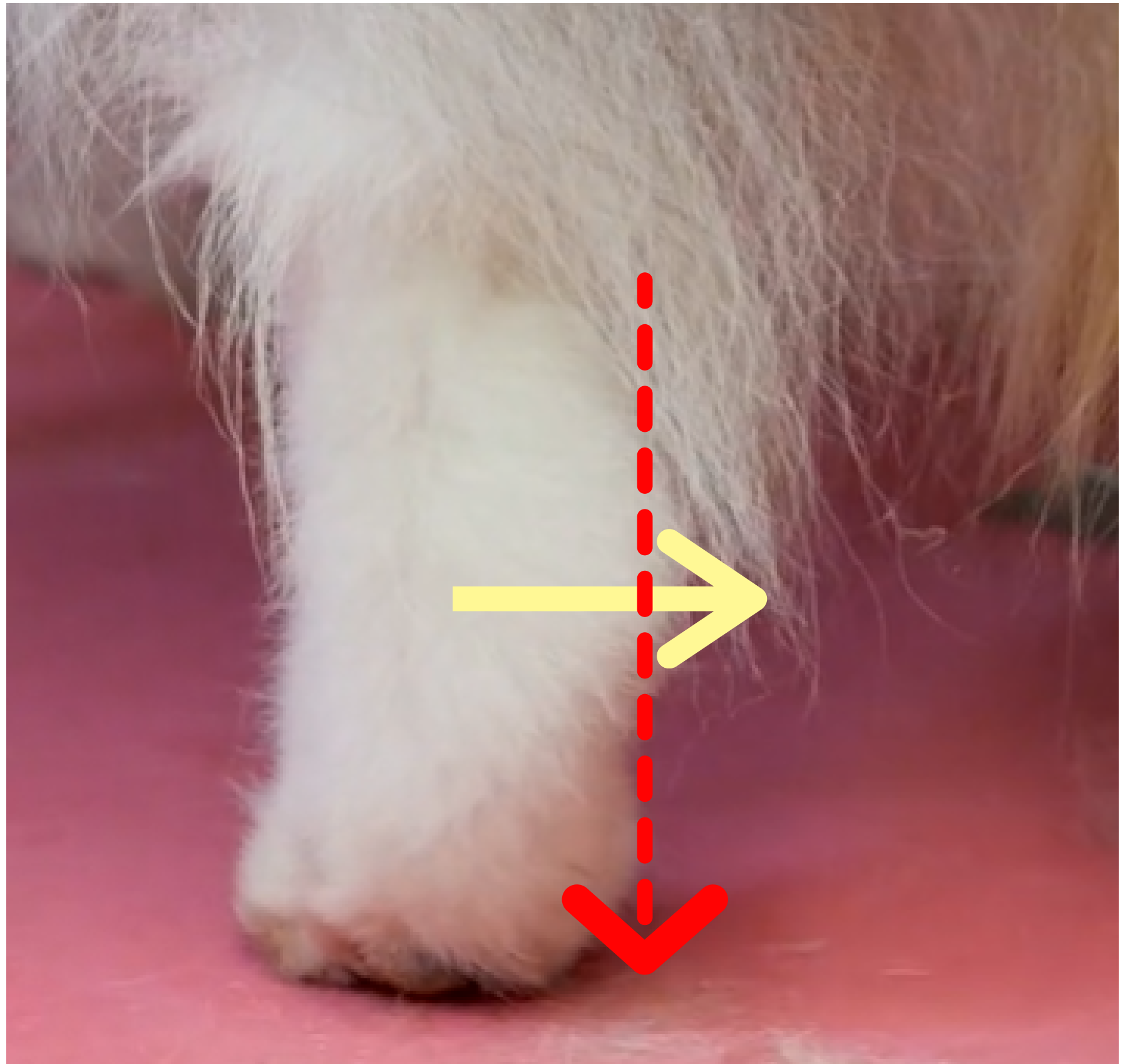
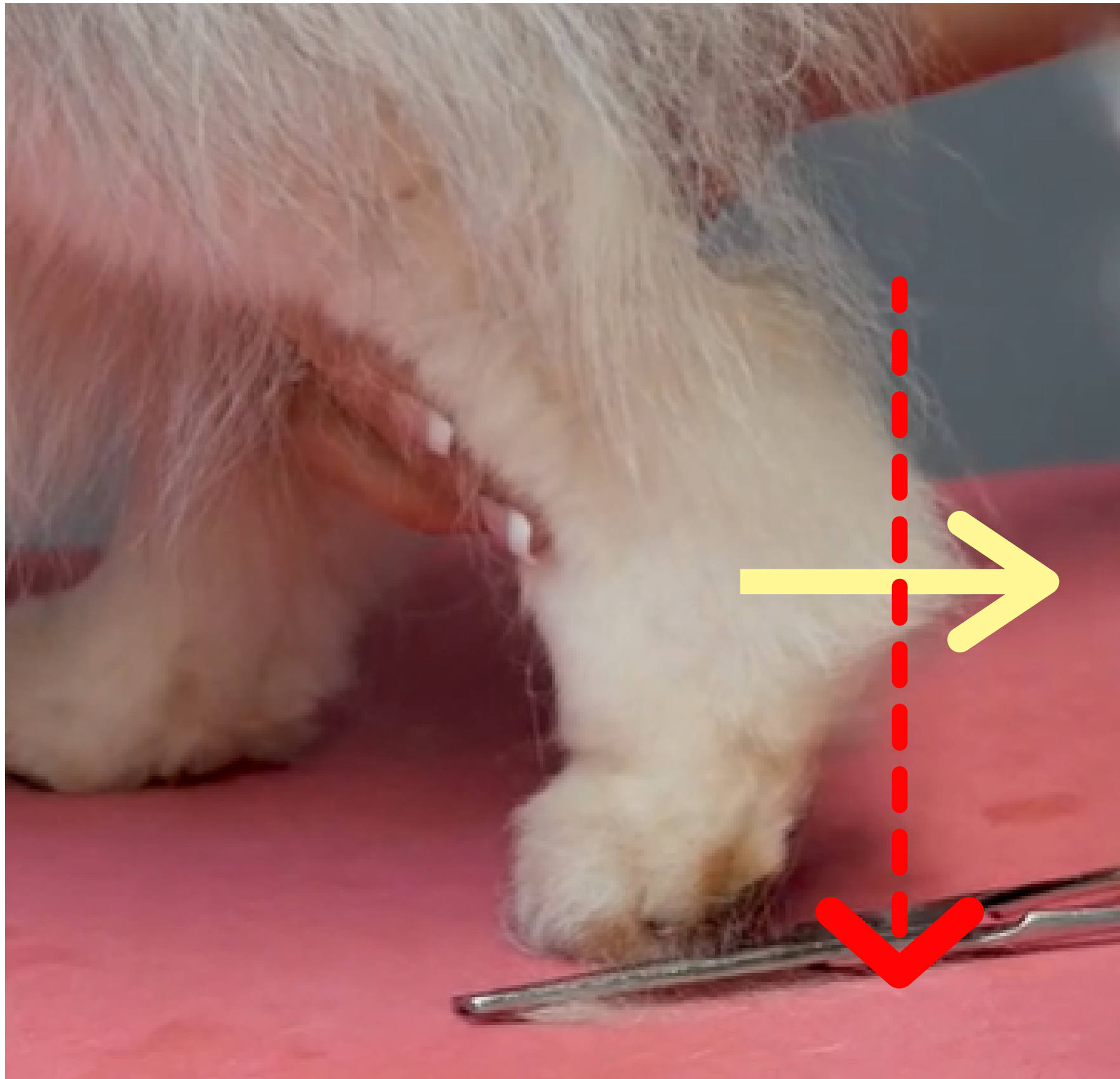
Trim the back feet in the same manner as the front feet; first starting with the bottoms of the feet, then around the feet, both with straight shears, and finally finishing the top of the foot with thinning shears. Next, move on to the hocks with the coat brushed up and out.



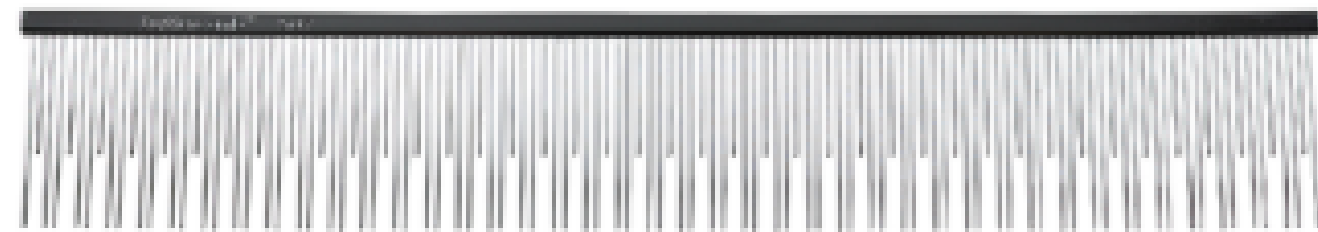
With thinning shears, trim the hocks straight up and down. Hold the pants out of the way. From the bottom of the hock hair to the back of the foot, tidy up the line with thinning shears, taking care not to make your dog look 'sickle hocked'.



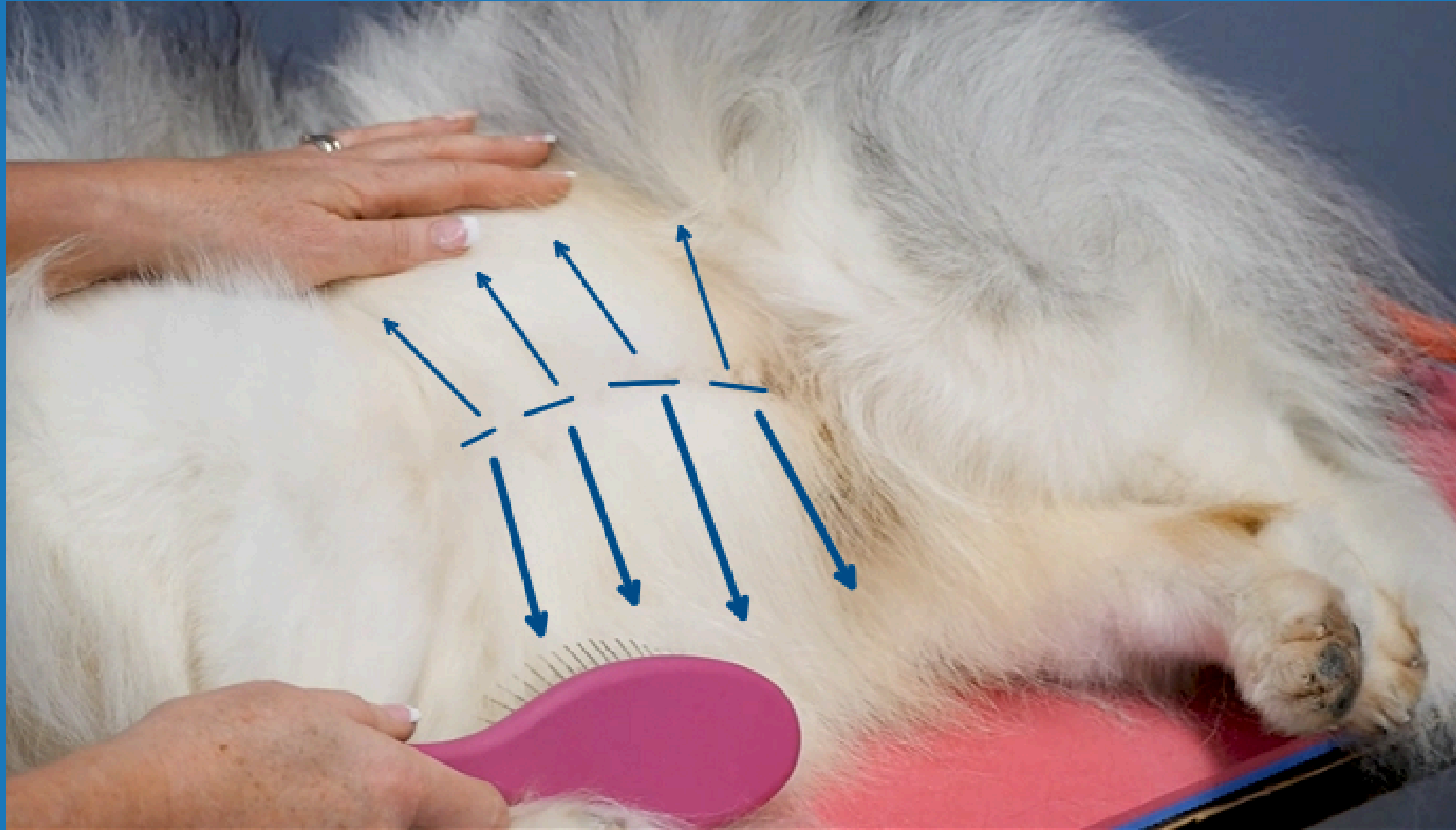
LEADING EDGE DOG SHOW ACADEMY







THE IMPORTANCE OF LINE BRUSHING



WHY ARE FINISHING TOUCHES IMPORTANT?

- People who show/compete with scissored/Poodle-type coated breeds are used to putting a "finish" on their dog, if not they learn quickly that it is required
 - (Note: a "finish" means finishing touches)
- Groomers who groom other coated types typically are more reluctant to put those finishing touches on their dogs or they simply don't know how
- Trimming off small imperfections in an outline, adding a bit of chalk or texture spray, adding shine spray or another finishing spray are all steps I often see overlooked before going in the ring
- Looking at your dog's outline before it leaves the salon OR is judges in a competition is crucial
- Finishing touches make all the difference in the first and last impression of your dog to the judge, owner and all that see him!

Access a copy of these slides

Scan the QR code or take a photo of the link below to access a copy of these slides and a certificate of completion!



LEADING EDGE DOG SHOW ACADEMY



bit.ly/wcggf-doublecoat
info@leadingedgedogshow.com