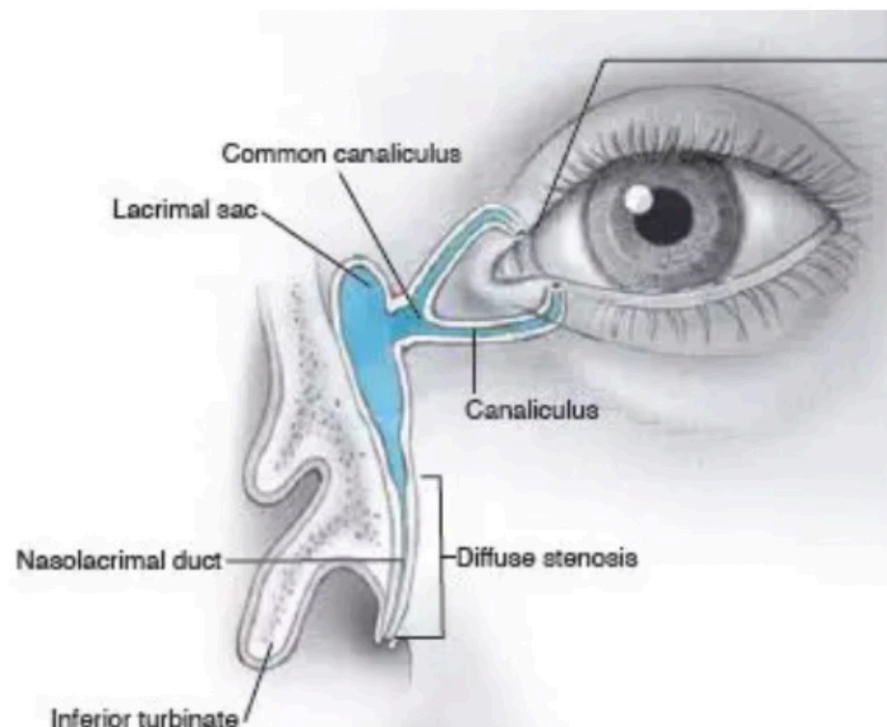


Nasolacrimal Anatomy Essentials



Key Anatomical Structures

- **Superior and inferior puncta:** Openings on medial lid margins
- **Vertical canaliculi:** 2mm vertical segments leading from each punctum
- **Horizontal canaliculi:** 8-10mm segments running medially beneath the skin
- **Common canaliculus:** Junction point where superior and inferior canaliculi meet (present in ~90% of individuals)
- **Lacrimal sac:** 12-15mm reservoir in the lacrimal fossa
- **Nasolacrimal duct:** 12-18mm channel descending through maxillary bone
- **Valve of Hasner:** Mucosal fold at inferior meatus opening, common obstruction site in infants

⚠ Understanding this anatomy is critical for proper cannula placement, gentle navigation through the system, and accurate interpretation of irrigation findings based on the location of resistance or reflux.