

More about Rhythm I

Dotted Notes:

A dot attached to the right side of a note head adds half of the original rhythmic value to that note. For example:

A half note is equal to two quarter notes...



...but a dotted half note is equal to three quarter notes.



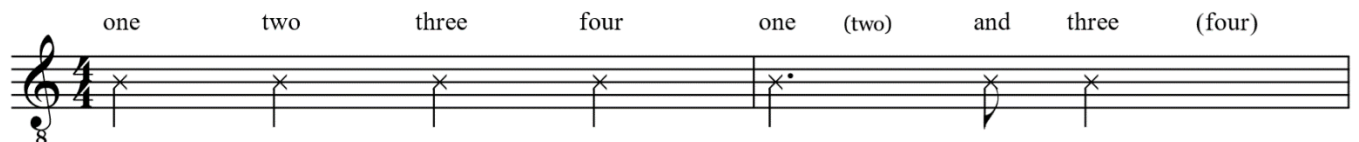
A quarter note is equal to two eighth notes...



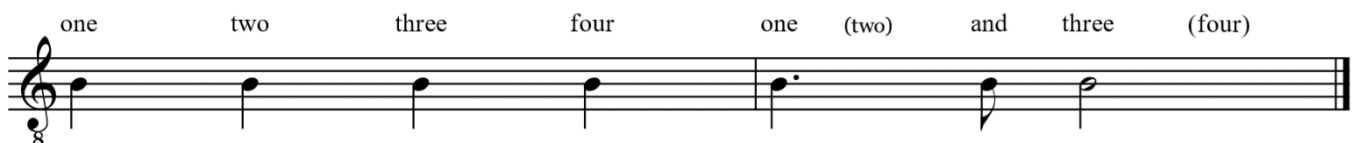
...but a dotted quarter note is equal to three eighth notes.



Before you play Ode to Joy, clap and count the dotted quarter note rhythm as it appears in the last two measures of lines 1, 2 and 4...



...and practice alternating right-hand fingers while playing the rhythm on the open B string.



Octave

You already know how to play the G note on the open third string. Ode to Joy introduces a second G note that is one octave higher than that on the open third string. Octaves are notes that share a letter name and sound almost identical but are higher or lower in pitch than one another. Compare the G note on the third string with the G note introduced below. What about the two pitches is the same?