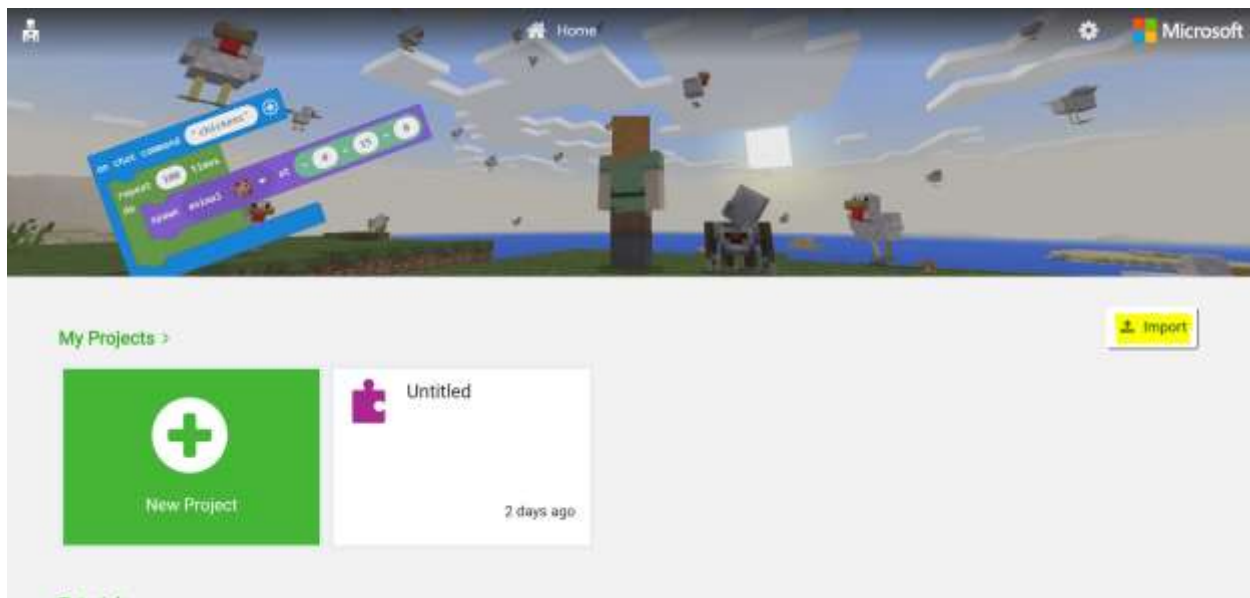


Instructions for Importing a .mkcd Make Code File

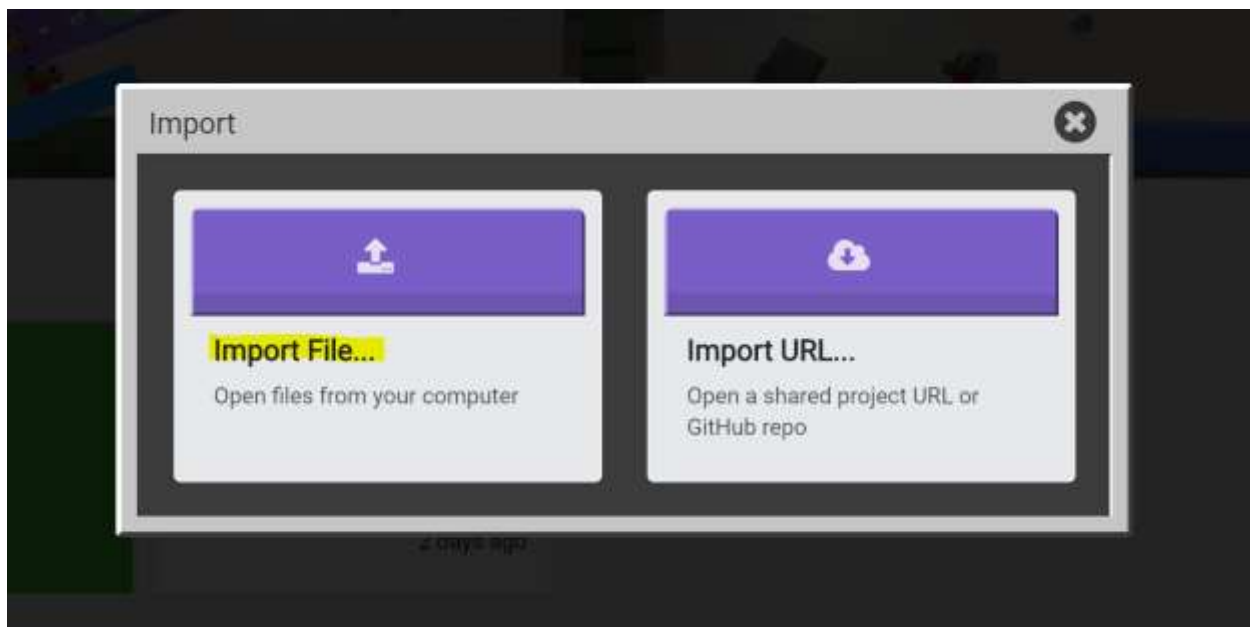
Download the .mkcd file you would like to use. For this Build Challenge, the file is named ‘function-coral-final.mkcd’

Within Minecraft: Education Edition, launch Code Builder by pressing “C” to code (on touch devices, click the image of the agent at the top of the screen.)

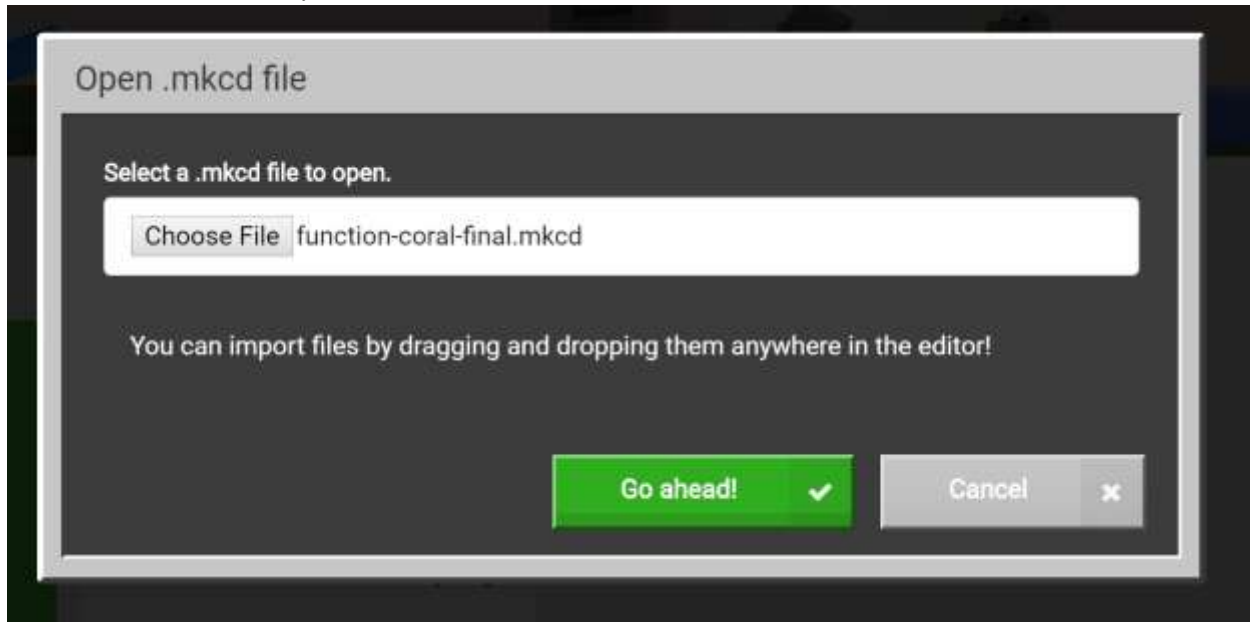
Choose Make Code as your coding editor, then look for the Import button.



After selecting Import, choose the option to Import File.



Locate the .mkcd file on your device and select “Go Ahead!”



You are ready to code!

For additional help with Minecraft: Education Edition visit our [Support Site](#).