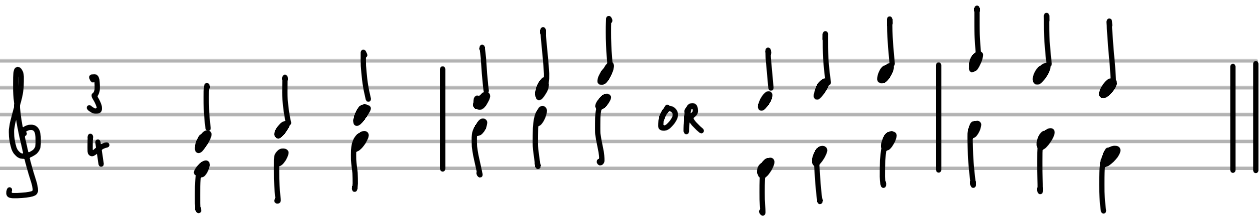


Voice leading tips 1

Parallel motion - two voices moving in the same direction



Contrary motion - two voices moving in opposite directions



Oblique motion - one voice stays where it is while the other voice moves



Similar motion - both voices move in the same direction but by different intervals

The image shows a single staff of music with a treble clef and a 4/4 time signature. The notation is handwritten and consists of two voices. The upper voice starts on a quarter note G4, moves up to A4, then B4, and finally C5. The lower voice starts on a quarter note G3, moves up to A3, then B3, and finally C4. A downward-pointing arrow is placed above the B4 note in the upper voice. The piece concludes with a double bar line.